

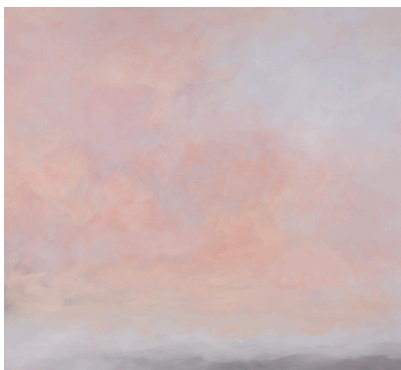
NEWS

FOR IMMEDIATE RELEASE

December 2015

Press Contact: Erin Lauderman, 612.625.9685, elauderm@umn.edu

**In the centenary year of Jon Schueler's birth,
Clouds, Temporarily Visible features artworks that represent,
address, or contemplate these oft watched, romanticized, and
studied formations above us.**



Jon Schueler, *Changes*, 1977-1980, oil on canvas.

MINNEAPOLIS – The Weisman Art Museum at the University of Minnesota presents *Clouds, Temporarily Visible* (January 30, 2016 through May 22, 2016), in the centenary year of the American painter John Schueler's birth. The exhibition showcases selections from the cloud paintings he made in the 1970s in recollection of the Scottish Hebridean Highlands fishing village of Mallaig, on the marvelously named Sound of Sleat, near the Isle of Skye. The exhibition presents works that address clouds as content and also foster a deeper contemplation about art's experiential relationship to its viewers, using the cloud as metaphor and guide.

The exhibition includes works from the early decades of the nineteenth century to today. Other artworks featured in the exhibition include: early twentieth-century American photographer Edward Weston's cloud studies; *Bursts and Whispers*, a video/installation work by Boston-based artist Yu-Wen Wu, appears and disappears on the walls of the gallery skylight wells; prints by famed nineteenth-century British landscape artist John Constable; *It Comes Naturally to Me*, an installation piece by Aniccha Arts, reflects on the impulse that drives human desire to modify and control the weather; an interactive sculpture/installation, *CLOUD*, made of thousands of light bulbs by Calgary-based artists Caitlind r.c. Brown and Wayne Garrett; and a mixed media "drawing" of clouds made from Scotch tape by artist Spencer Finch.

Surveying clouds in art in the years that also mark the birth of meteorology, *Clouds, Temporarily Visible* offers a meditation on the scientific and Romantic/poetic ambitions of the art with a specific interest in the manners in which the two strains converge. Deliberately making use of the height of the gallery spaces, the exhibition seeks to



Caitlind r.c. Brown and Wayne Garrett, *CLOUD*, 2012, mixed media.

reposition the viewer and her gaze to consider the space as volume and the immaterial as palpable.

RELATED PROGRAMMING

Exhibition Preview Party

Friday, January 29, 2016

7:00 p.m. – 10:00 p.m.

We're on cloud nine about *Clouds, Temporarily Visible*, the exhibition that explores the puffy, comfy, and daydream-inducing particles of water suspended above us. View a documentary of Jon Schueler projected from 16mm film and visit with artists Caitlind r.c. Brown and Wayne Garrett and interact with their light bulb cloud installation. The night starts with a new durational performance by Pramila Vasudevan of Aniccha Arts that explores the physical embodiment of ideal weather. Using movement and sound generated from the body, this piece explores the connection between human action and the sought-after weather conditions. For more info and to register visit z.umn.edu/cloudparty

Cloud Lovers, Unite!

Talk with author Gavin Pretor-Pinney

Wednesday, February 17, 2016

7:00 p.m.

Pretor-Pinney, founder of the Cloud Appreciation society, finds creative inspiration in the overlooked wonders of clouds and invites you to slow down, look up, and enjoy the unexpected paths cloudspotting can take you. For more info and to register visit z.umn.edu/pinney

Slow Art Day

Saturday, April 9, 2016

One day a year people all over the world visit local museums and look at art—slowly. Head to the museum to investigate artworks, participate in a watercolor workshop, or just soak in the inspirational feeling of being surrounded by art.

Watercolor Workshop with Jim Mondloch

Saturday, April 9, 2016

11:00 a.m. – 3:00 p.m.

Explore the exhibit *Clouds, Temporarily Visible*, then work with color, texture, values, design, and various washes and brushstrokes with Minnesota teaching artist Jim Mondloch.

For more info and to register visit z.umn.edu/wamwatercolor

ABOUT WAM

Since its origin in 1934, the Weisman Art Museum has been a teaching museum for the University of Minnesota. Today, education remains central to the museum's mission to create art experiences that spark discovery, critical thinking, and transformation, linking the University and the community. The Weisman Art Museum is located at 333 East River Road, Minneapolis, on the University of Minnesota campus. Admission to exhibition galleries is always free.

###